

PACKAGE AND LABEL VERIFICATION SYSTEMS



Eliminate Labeling Errors with Automated Inspections



MATCHING LID DETECTION SYSTEM

Verify Matching Lids & Containers

WE INSPECT:

- Square tubs with lids
- Round tubs with lids
- Round bottles
- Jars
- Tubs

WE LOOK FOR:

- Lid and label artwork
- Lid and container match
- 1D barcode
- 2D barcode
- Artwork match
- Artwork and recipe match

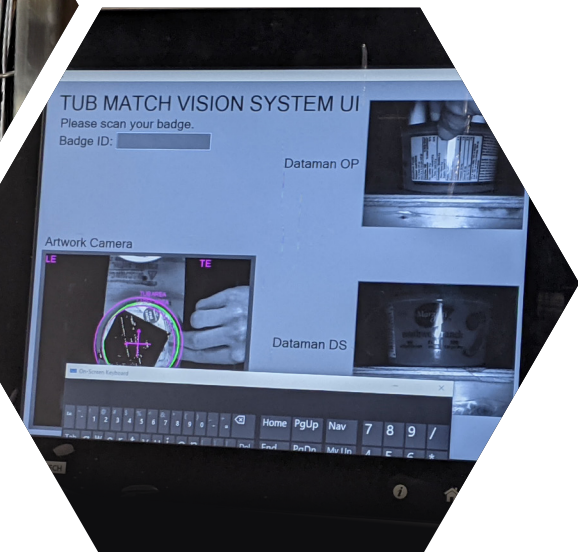
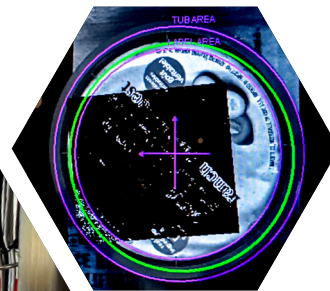
PREVENT RETAILER REJECTION, CUSTOMER RETURNS AND PRODUCT RECALLS

IMPROVE THROUGHPUT

PREVENT LID AND CONTAINER ERRORS

PREVENT MISLABELED PRODUCTS

REDUCE SCRAP AND LINE STOPS



Simulated Tub Inspection in Our Vision Testing Lab

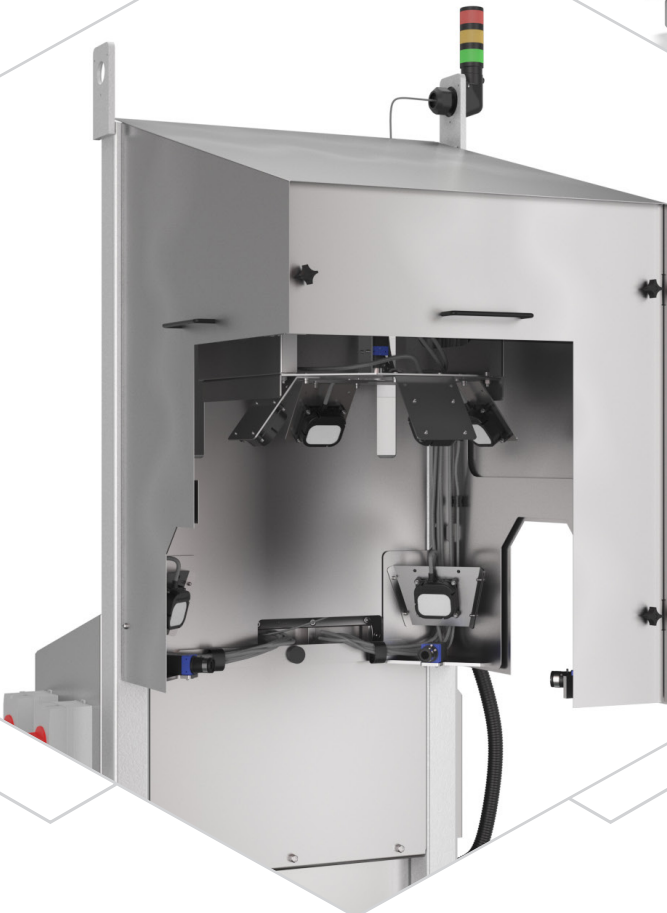


TOUCHSCREEN HMI PROVIDES EASY VIEW OF THE VISUAL INSPECTION & CAPTURES ALL PASS/FAIL RESULTS





**SUPERIOR DESIGNED MOUNTING
ALLOWS CAMERA TO BE RAISED OR
LOWERED WITHOUT AFFECTING THE
INTEGRITY OF THE VISION INSPECTION**





Improve brand integrity & customer satisfaction.

System Features

SUITABLE FOR	<ul style="list-style-type: none"> ▪ Any round, square, or oval-shaped container or package ▪ Artwork (brand-specific or recipe-specific) and 1D or 2D barcodes (less than 6" diameter) <p>NOTE: Parts must be oriented, OR have adequate gap to see 360 degrees around the product</p>
LINE SPEEDS	Appropriate for line speeds up to 1,200 ppm or more*
SYSTEM HIGHLIGHTS	<ul style="list-style-type: none"> ▪ Verifies package components and labels are present and match each other, are placed in the correct positions, and match the current production recipe. ▪ Rejects products off the line with the following errors: <ul style="list-style-type: none"> – Mismatched labels, lids, or package components – Misplaced labels on tubs, bottles, or packages – Mismatched front and back labels – Mismatched label to product recipe – Skewed or incorrectly placed labels, and missing or misapplied lids ▪ Up to 99.97% accuracy (maximum of 3 false fails/false pass in 10,000 products)* ▪ High speed rejection of defective product reduces line stops ▪ Includes encoder for accurate reject tracking ▪ Designed for standard conveyor heights approximately 40" ▪ Height adjustable for multiple sized containers ▪ Suitable for food manufacturing
OPTIONAL UPGRADES	<ul style="list-style-type: none"> ▪ Higher or lower parts per minute rates ▪ Adaptable for various standard conveyor heights ▪ Detects label placement within 1mm of desired location ▪ Detects label skew within 20 degrees of desired angle ▪ Washdown and wet environments ▪ Integration such as plant data systems and PLCs ▪ Ignition HMI ▪ Additional inspections can be added, such as: <ul style="list-style-type: none"> – Side artwork inspections – Cap, lid and closure defect inspections

Technical Specifications

CAMERA	Imperx
SOFTWARE	Cognex
MOUNTING METHOD	Stainless steel stand suitable for food manufacturing
PHYSICAL HARDWARE	<ul style="list-style-type: none"> ▪ Control Panel with PLC and IPC ▪ Touch HMI ▪ Electronic rejector is included

*Maximum speeds and inspection accuracy may vary per specific application

MATCHING LABEL DETECTION SYSTEM

Verify Matching Labels & Accurate Label Placement

WE INSPECT:

- Oval bottles
- Sprayer bottles
- Tubs
- Cans
- Jars
- Carton
- Boxes
- Round bottles

WE LOOK FOR:

- 1D barcode match
- 2D barcode match
- Label placement accuracy
- Front, back, side, neck label match
- Label(s) and recipe match
- Label artwork

ELIMINATE MISLABELED PRODUCTS

REDUCE SCRAP AND LINE STOPS

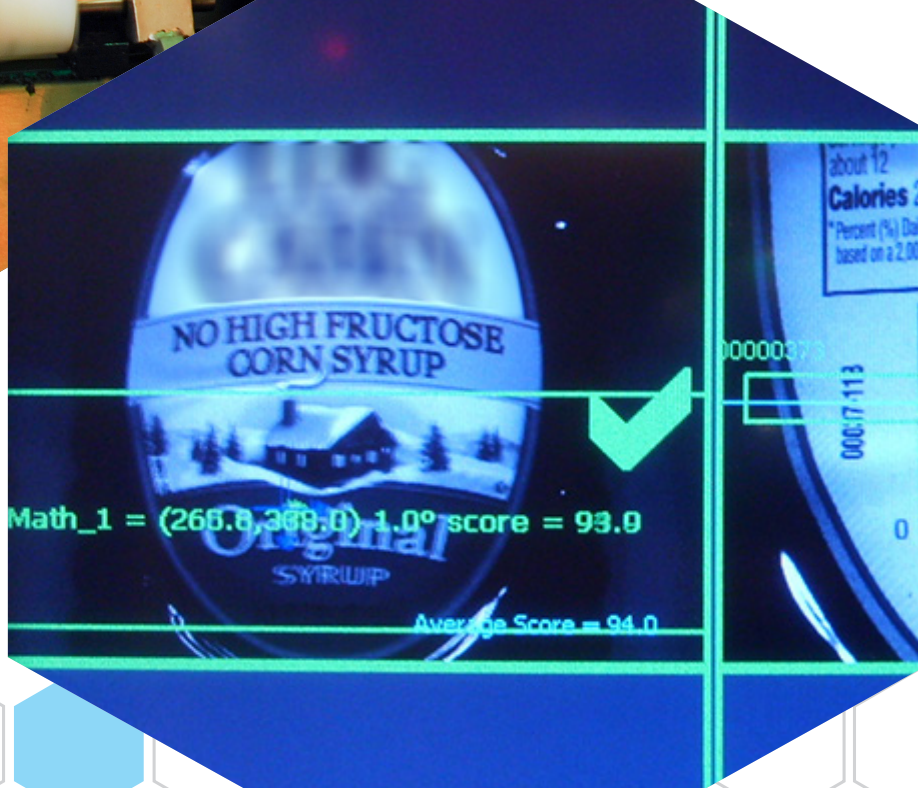
PREVENT RETAILER REJECTION, CUSTOMER RETURNS AND PRODUCT RECALLS

IMPROVE THROUGHPUT





**FLEXIBLE VISION INSPECTION
SYSTEM ACCOMMODATES ROUND,
SQUARE, OR OVAL-SHAPED
CONTAINER OR PACKAGE.**





TRUSTED PARTNERS

We Support the Brands You Trust & the Products You Rely On

For over 25 years EPIC has proudly partnered with leading brands to drive efficiencies, brand integrity and customer satisfaction. Here are some of the many ways we have helped our partners:

- Rapidly respond to dynamic consumer preference
- Diversify product offering and gain more market share
- Improve brand integrity and customer satisfaction
- Produce consistent, higher quality products
- Increase efficiency, improve product fulfillment, and meet sustainability goals
- Support 24/7 operations
- Reduce labor dependencies and human capital costs

Let us help you improve your operations, your brand integrity and your product quality.



314-501-6534

sales@epicsysinc.com

EPIC Vision Systems

4142 Meramec Bottom Road

St. Louis, MO 63129, US

VS-LABEL-INSPECT 2nd Ed. 8/22

© 2022 EPIC Systems