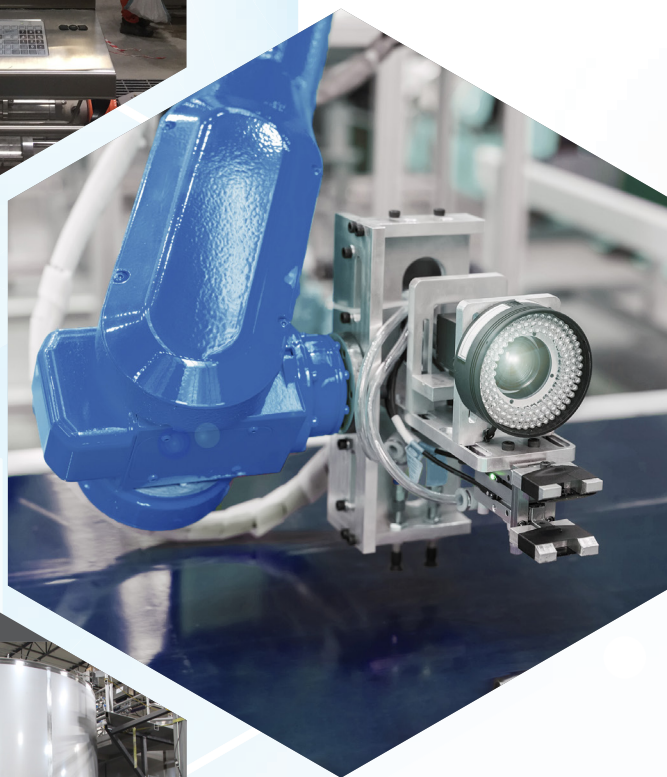


# COMPANY OVERVIEW

Solving Complex  
Manufacturing Challenges



314-501-6534

[sales@epicsysinc.com](mailto:sales@epicsysinc.com)  
[www.EPICsysinc.com](http://www.EPICsysinc.com)



## MESSAGE FROM THE CEO

Mike Higgins



Greetings,

Thank you for your interest in EPIC Systems. We were founded on the idea that manufacturers need better solutions to many of the challenges that face them and we could help. Help to solve those challenges. Help to make you a better version of what you are today. Help to make you more successful. Today, 25 years later, that original idea still rings true.

Over the last 25 years we have built a company guided by ethics and fairness. Building a culture of high standards is well worth the endeavor, resulting in many benefits for our customers and our employees.

At EPIC we take on the responsibility to solve problems and create solutions for our clients that our competition cannot. Our people deliver excellence through proven engineering and through building high quality systems that make our clients successful. The "EPIC Way" reduces risk and ensures success for all of our stakeholders: our clients, suppliers, employees, and company.

The "EPIC Way" isn't just a statement, it is the product of what has been built over many years. A culture of high standards is the output of the integrity of each person that works at EPIC. There is work that no one sees and is implemented when no one is watching. In our culture, this commitment to excellence is what it means to be a part of the "EPIC Team". A team that delivers:

- Passion: For manufacturing excellence; for solving problems; for driving your success.
- Perspective: By deploying a unique approach; combined with diverse experience; founded on proven engineering.
- Performance: Through delivering tangible results; based on deep trust; resulting in long term relationships.

Thank you for your business and your interest in EPIC Systems. We look forward to the opportunity to serve you.

A handwritten signature in black ink, appearing to read "Mike Higgins".

MIKE HIGGINS

CEO, EPIC Systems Group, LLC

# YOUR BUSINESS MATTERS TO US

## WE KNOW YOUR CHALLENGES

- Rising interest rates
- Global inflation
- Skilled labor shortage
- Supply chain disruptions
- Sustainability and resource management



**INVESTED IN  
YOUR SUCCESS**

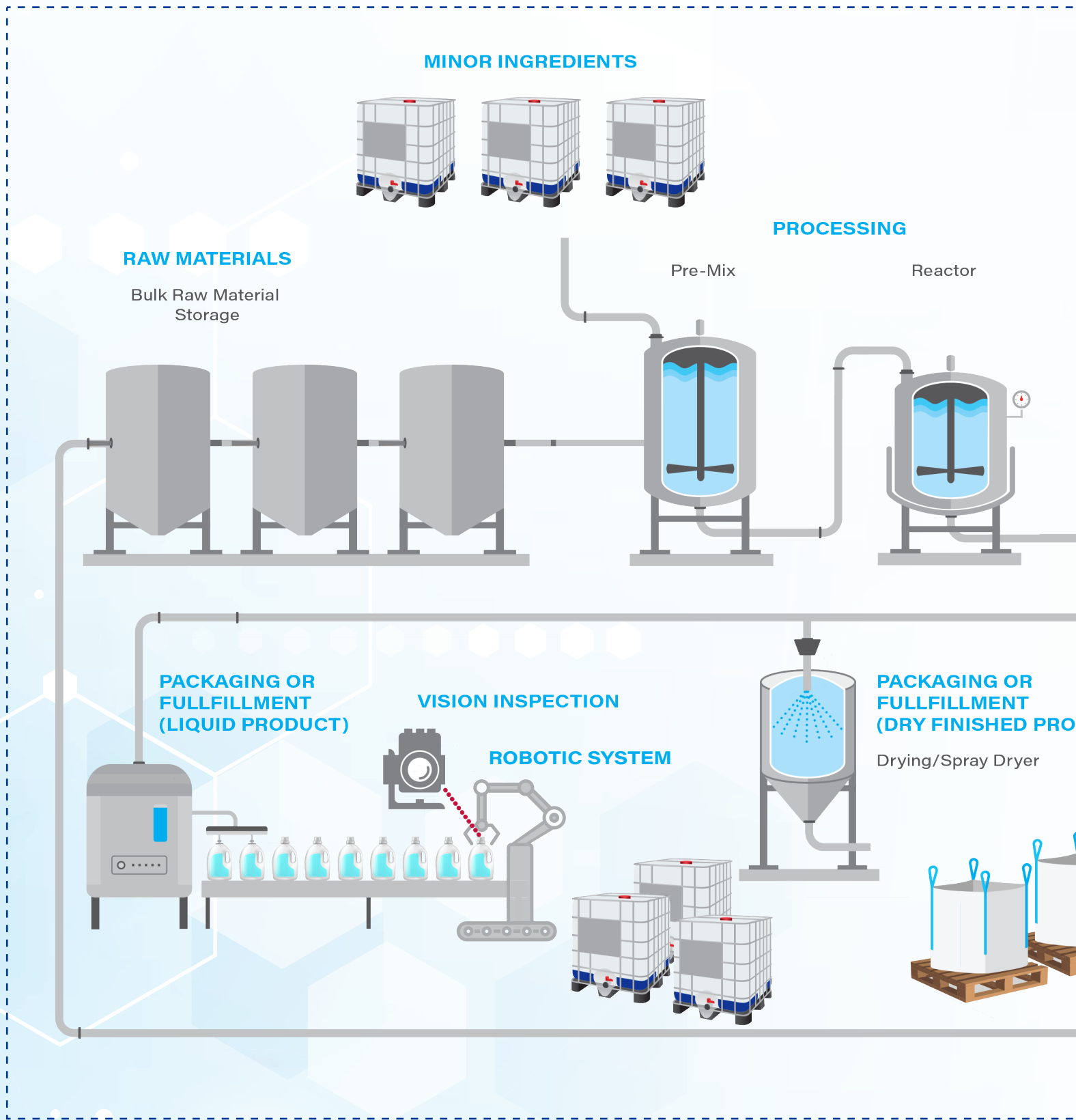
## Process Optimization Matters More Than Ever

### WE HAVE YOUR SOLUTIONS

- Process automation
- Pilot plants and scale-ups
- Automated inspections
- Robotics and cobots



# PROCESSES WE TOUCH

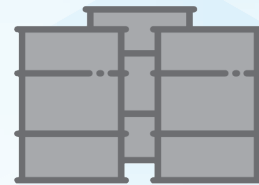






You have complex process manufacturing needs... We bring value at every step.

DISTILLATION



PACKAGING OR  
WASTE REMOVAL

BYPRODUCTS

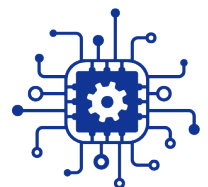
DISTILLED PRODUCT

Finished Product Storage

SOLVENT RECOVERY

DUCT)

FULLY-AUTOMATED PROCESS PLANT



# PROCESS

## SYSTEMS & SOLUTIONS



### PRODUCTION PLANT EXPANSIONS

---

Solutions for greenfield/new build process systems, brownfield and/or plant expansions.

- Brownfield
- Greenfield
- Plant expansions



### PILOT PLANTS & R&D SCALE-UPS

---

Build pilot plants (process development and/or scale-ups).

- Stage gated development (concept to startup)
- Single point of project ownership
- Modular installation tactics



### STORAGE & TRANSFER

---

Optimize material storage and minimize contamination, spills, evaporation, and exposures.

- Bulk raw materials (tank farm)
- Pipe racks
- Fluid transfer/pump skids
- Automated tote-to-tote transfer skids
- Temperature controlled storage solutions



### MIXING & REACTING

---

Experience consistent, higher quality product, & improve efficiency & product fulfillment with reduced human capital.

- Inline blending/continuous blending
- Batch mixing
- Batch reacting
- Liquid/liquid
- Solid/liquid (powder additions)



## LATE PRODUCT DIFFERENTIATION

Expand & diversify product offering & rapidly respond to dynamic consumer preferences without sacrificing quality.

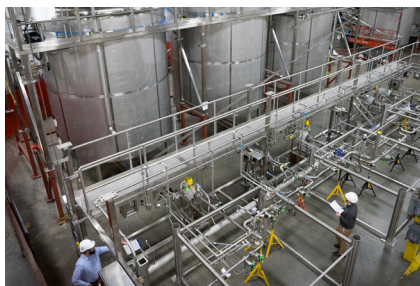
- Late differentiation solutions including fragrances, colorants, and enzymes



## DISTILLATION/SEPARATION

Improve quality of product & purity of raw materials while meeting sustainability goals.

- Thermal distillation
- Vacuum distillation
- CO2 capture
- Solvent recovery



## CIP/SIP

Be more efficient & cost effective, & increase product & employee safety.

- Centralized
- Local



## UTILITIES

Ensure continuous, reliable operation, quality production, & meet cGMP.

- Power
- Heating & cooling
- Heat transfer skids



**Increase efficiency and  
improve product fulfillment**

# AUTOMATION

## CORE COMPETENCIES & PLATFORMS WE SUPPORT

### 2. PLANT NETWORK INFRASTRUCTURE

#### PROCESS AUTOMATION

- IO link
- AS-interface
- HART

#### INDUSTRIAL CONTROL

- Ethernet/IP
- Modbus TCP
- ProfiNet

### 4. CONTROLS HARDWARE

#### DRIVES & MOTOR STARTERS

- Rockwell/AB PowerFlex Drives
- E300
- ABB ACS Drives
- Eaton PowerXL

#### DISTRIBUTED I/O

- Rockwell/AB Point I/O
- Rockwell/AB Flex 5000 I/O
- Siemens SIMATIC-ET 200
- Emerson RSTi-EP I/O

#### SUPPORT HARDWARE

- Allen Bradley
- Phoenix Contact
- Stratix
- Moxa
- SolaHD
- Puls

Not all controls hardware competencies are listed.

### 1. CONTROLS PLATFORMS

#### ROCKWELL

- Control & Compact Logix

#### SIEMENS

- Simatic S7 1500 & 300

#### EMERSON

- PackEdge
- RSTI-EP Controller

### 3. PROGRAMMING

#### PLC

- Rockwell/AB Studio 5000
- Rockwell PlantPAx
- Siemens SIMATIC STEP 7
- Emerson PAC Productivity Suite

#### HMI

- Rockwell/AB Factory Talk View
- Ignition
- Siemens SIMATIC HMI
- Emerson PAC Productivity Suite
- AVEVA (Wonderware)

### 5. INSTRUMENTATION

- Endress and Hauser
- Emerson (Rosemount and Micromotion)
- IFM
- And many more...

### 6. REGULATIONS

- FM/CSA
- NFPA70/NEC
- PLe/SIL
- UL508A
- CE



# AUTOMATION SYSTEMS & SOLUTIONS

## POWER DISTRIBUTION & MOTOR CONTROL DESIGN

- Power Feed Sizing
- MEDL (Motor and Electrical Device Lists)
- Power Schematics
- Hardware Specifications

## CONTROLS DESIGN

- I/O Lists
- PLC and I/O Specification and Sizing
- Panel Fabrication Drawings
- I/O Schematics
- Hardware Specifications

## PLANT NETWORK DESIGN

- Plant / Process Network Architecture
- Hardware Specifications
- Protocol Conversions
- Virtualization

## INSTRUMENT SPECIFICATION

- Instrument Data Sheets
- Instrument Lists

## PROCUREMENT

- Quoting
- Ordering
- OEM Pricing Discounts
- Expediting

## PROCESS CONTROL (PLC/HMI PROGRAMMING)

- Batch Process Control
- Continuous Process Control
- Master Line Control
- Platform Conversions
- Control Integration
- Formula Modification
- Process Control Modifications

## ELECTRICAL PANEL FABRICATION

- UL508 Certification
- Motor Control Panels
- Control Panels
- Remote I/O Panels
- HMI Panels (Operator Interface)

## CHECKOUT & COMMISSIONING

- Development of Acceptance Testing Plans
- FAT (Factory Acceptance Testing)
- sFAT (Software FAT)
- SAT (Site Acceptance Testing)/Commissioning
- Instrument Pre-Commissioning (Green Tagging)
- Preventative Maintenance Programs

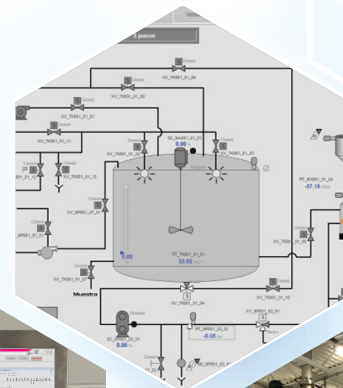
## CONTROL SYSTEM TROUBLESHOOTING

- Process Analysis
- Line Analysis
- Process Optimization
- Debugging
- Remote Access

## TRAINING

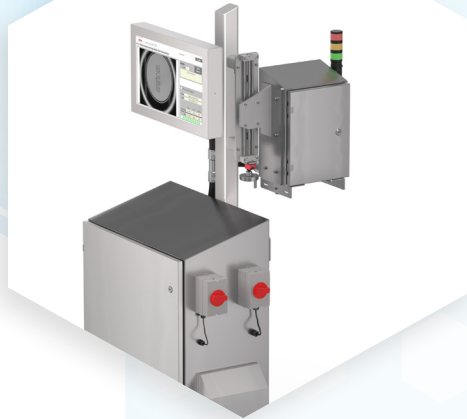
- SOP (Standard Operating Procedures) Development
- Training Manuals
- Hands-On Operator Training
- Simulation Training

We are not just programmers, we are automation engineers supported through process engineering expertise.



# VISION

## SYSTEMS & SOLUTIONS



### We Design Automated Inspection Systems For:

- Damages and defects
- Characters and codes
- Seal integrity inspections
- Alignment and positioning
- Match and verification
- Filling and orientation
- Track and trace
- Other inspections



Machine vision can transform manufacturing productivity

### We Inspect

#### BOTTLES



- Round bottles
- Oval bottles
- Bottles with handles
- Spray bottles



#### POUCHES & TUBES

- Product pouches
- Single unit dose packs
- Dispensing & squeeze tubes
- Tubes with lids & caps



#### ASSEMBLED PRODUCTS & DEVICES

- Batteries
- Medical devices
- Other assembled products



#### CANS

- Metal cans
- Cans with pull-top lids



#### JARS

- Glass jars with lids
- Plastic jars with lids



#### TUBS

- Round tubs with lids
- Square tubs with lids



#### CARTONS

- Square cartons
- Rectangular cartons
- Round cartons



#### BOXES

- Product boxes
- Corrugated boxes
- Corrugated cases

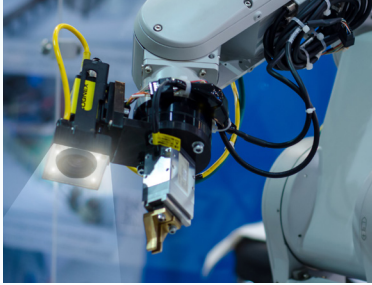


#### WEB PRODUCTS

- Paper products
- Plastic films
- Continuous materials

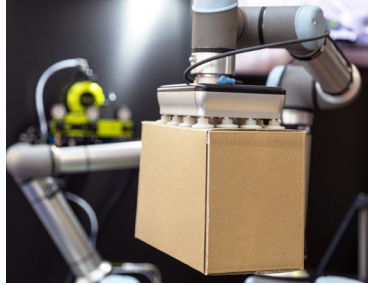
# ROBOTICS

## SYSTEMS & SOLUTIONS



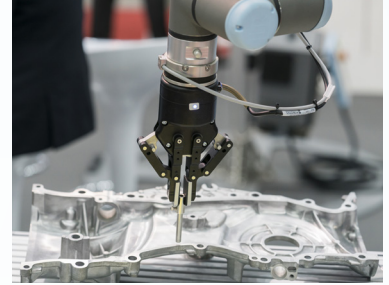
### VISION INSPECTION & VGR (VISION GUIDED ROBOTICS)

- Quality inspection
- Random part presentation
- Vision guidance



### PACKING & PALLETIZING

- Case packing & unpacking
- Palletizing & depalletizing
- Collaborative (cobot) & industrial robot applications



### PRECISION ASSEMBLY

- Component assembly
- Part insertion
- Nut runners & screw-driving



### MATERIAL HANDLING

- Machine/press tending
- Pick & place



### 3D BIN PICKING

- Part sortation
- Machine or conveyor loading packaging
- Assembly



### OTHER APPLICATIONS

- Adhesive dispensing
- Lab analysis
- Mobile robotics
- Wash-down & clean-room robotics

## Why Choose EPIC Integration

Our *in-house robotics & vision experts* team-up to maximize your results & performance. Let us help you:

- Reduce technical project risks
- Increase throughput
- Improve safety
- Reduce product loss
- Minimize ergonomic injuries
- Reduce downtime
- Improve reliability
- Overcome labor shortages



## We Support the Brands You Trust & the Products You Rely On

For over 25 years EPIC has proudly partnered with leading brands to drive efficiencies, brand integrity and customer satisfaction. Here are some of the many ways we have helped our partners:

- Rapidly respond to dynamic consumer preference
- Diversify product offering and gain more market share
- Improve brand integrity and customer satisfaction
- Produce consistent, higher quality products
- Increase efficiency, improve product fulfillment, and meet sustainability goals
- Support 24/7 operations
- Reduce labor dependencies and human capital costs

**Let us help you improve your operations, your brand integrity and your product quality.**

### TRUSTED PARTNERS



314-501-6534

[sales@epicsysinc.com](mailto:sales@epicsysinc.com)

**EPIC Systems**

4142 Meramec Bottom Road  
St. Louis, MO 63129, US

ECS-OVERVIEW 1st Ed. 3/23

© 2023 EPIC Systems