

Automation



314-501-6534
sales@epicsysinc.com
www.EPICsysinc.com

Core Competencies

& PLATFORMS WE SUPPORT

PLANT NETWORK INFRASTRUCTURE

PROCESS AUTOMATION

- IO link
- AS-interface
- HART

INDUSTRIAL CONTROL

- Ethernet/IP
- Modbus TCP
- ProfiNet

CONTROLS HARDWARE

DRIVES & MOTOR STARTERS

- PowerFlex Drives
- E300
- ABB ACS Drives
- Eaton PowerXL

DISTRIBUTED I/O

- Point I/O
- Flex 5000 I/O
- SIMATIC-ET 200
- RSTi-EP I/O

SUPPORT HARDWARE

- Allen Bradley
- Phoenix Contact
- Stratix
- Moxa
- SolaHD
- Puls

Not all controls hardware competencies are listed.

CONTROLS PLATFORMS

ROCKWELL

- Control & Compact Logix

SEIMENS

- Simatic S7 1500 & 300

EMERSON

- PackEdge
- RSTi-EP Controller

PROGRAMMING

PLC

- Studio 5000
- Rockwell PlantPax
- SIMATIC STEP 7
- PAC Productivity Suite

HMI

- Factory Talk View
- Ignition
- SIMATIC HMI
- PAC Productivity Suite
- AVEVA (wonderware)

INSTRUMENTATION

- E&H
- Emerson (Rosemount)
- IFM
- And many more...

REGULATIONS

- FM/CSA
- NFPA70/NEC
- PLe/SIL
- UL508A
- CE

HOW WE DO IT

We are an Engineering Design Firm that Fabricates Turnkey Automation Systems



CUSTOMER JOURNEY

EPIC takes you from idea to final product by following these steps of our automation engineering process. Each step in your journey is carefully project managed and integrated to achieve your goals, without exceeding your budget.

SYSTEMS & SOLUTIONS We Offer



We are not just programmers, we are automation engineers supported through process engineering expertise.

POWER DISTRIBUTION & MOTOR CONTROL DESIGN

- Power Feed Sizing
- MEDL (Motor and Electrical Device Lists)
- Power Schematics
- Hardware Specifications

CONTROLS DESIGN

- I/O Lists
- PLC and I/O Specification and Sizing
- Panel Fabrication Drawings
- I/O Schematics
- Hardware Specifications

PLANT NETWORK DESIGN

- Plant / Process Network Architecture
- Hardware Specifications
- Protocol conversions
- Virtualization

INSTRUMENT SPECIFICATION

- Instrument Data Sheets
- Instrument Lists

PROCUREMENT

- Quoting
- Ordering
- OEM Pricing Discounts
- Expediting

PROCESS CONTROL (PLC/HMI PROGRAMMING)

- Batch process control
- Continuous process control
- Master Line Control
- Platform Conversions
- Control integration
- Formula Modification
- Process control modifications

ELECTRICAL PANEL FABRICATION

- UL508 Certification
- Motor Control Panels
- Control Panels
- Remote I/O Panels
- HMI Panels (Operator Interface)

CHECKOUT & COMMISSIONING

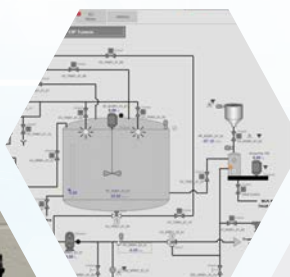
- Development of Acceptance Testing Plans
- FAT (Factory Acceptance Testing)
- sFAT (Software FAT)
- SAT (Site Acceptance Testing)/Commissioning
- Instrument Pre-Commissioning (Green Tagging)
- Preventative Maintenance Programs

CONTROL SYSTEM TROUBLESHOOTING

- Process Analysis
- Line Analysis
- Process Optimization
- Debugging
- Remote Access

TRAINING

- SOP (Standard Operating Procedures) Development
- Training manuals
- Hands-on Operator Training
- Simulation Training



314-501-6534
sales@epicsysinc.com

EPIC Systems
4142 Meramec Bottom Road
St. Louis, MO 63129, US

ECS-AUTO-SYS 1st Ed. X/22
© 2022 EPIC Systems